

Knoxville Philatelic Society News

June 2016

Volume 2016, Number 6

Tom Broadhead, Editor
Ralph Dinwiddie, Publisher
KPS - P.O. Box 50422
Knoxville, TN 37950-0422

<http://knoxstamps.com>

www.sefsc.org/knoxville-philatelic-society.html

<http://stamps.org/DisplayPage.aspx?id=69>



APS Chapter 1189-119261



Southeast Federation
of Stamp Clubs

9 Gold in a Row!

We have just been notified by the APS Chapter Activities Committee that the Knoxville Philatelic Society News has earned its 9th consecutive gold award. That is a record for the newsletter competition program.

Comments from the judges, Jean Stout, Cheryl Edgecomb, and Bruce Johnson led off with praise for **Ralph Dinwiddie's** cachets – “Designer envelopes is going the extra mile. Liked the mailer cover/cachet and commemoratives – great keepsakes.” Judges also liked the “Stamp of the Month” with a real stamp added each issue. Participation in the club and articles and notes written by many members earned positive comments, along with the use of color, stamp images, highlighting members' names, the masthead, president's column, formatting and layout. One judge said, “I'm ready to join!” Looks like we'll be sending a copy of the newsletter with a membership application!

Many thanks to our outgoing President, **Barbara Steverson**. I'm not sure that she looked forward to my monthly request for a column for the last two years, but she wrote some great ones. I enjoyed looking for stamp images to add related to her writing. Welcome to new KPS President, **Dave Anderson**, who will, similarly, get reminder emails, or in person when we see each other at lunch at UT.

Are you traveling abroad or happen to have about 120 copies of a stamp or from a stamp series? With our growing membership, it's no longer possible to just buy a sheet of 100 US stamps. I have a few of those on hand and will be looking for a few more copies to cover our needs. Do you have 20 copies of US J90, the 2 cent US postage due of 1959? No hurry – I'll probably use that on the December news with the dues payment notice!



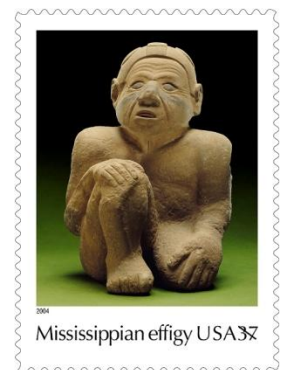
Tom Broadhead

President's Column

This is my first column as your President. I am honored to have been elected and will try to do a good job. KPS is in great shape, thanks to the hard work and support of our many members, and particularly outgoing President **Barbara Steverson**, who did so much in so many areas, from obtaining approval for updates to the constitution and by-laws, to overseeing meetings with good grace and humor. **Dave Warfel**, whose term was also up, deserves thanks for providing thoughtful leadership and incisive comments while serving on the board.

My goal as President is for KPS to continue to do what it has been doing so well, which is to promote interest and enthusiasm for stamp collecting. Our membership is large and growing, and one thing that I like about it is that we all share a common interest in stamps, even if the rest of our lives may go in very different directions. I plan to work on the web page that **Ralph Dinwiddie** so fabulously put in place. And, I hope we continue to have successful shows, and really appreciate the support of all those who attend, from dealers to KPS members to the interested public.

The stamp here (Scott 3873f) shows a late prehistoric era, probable mortuary temple, statue known as 'Sandy' that can be seen at the McClung Museum on the UT campus. Its selection is deliberate, since when not thinking about stamps I am a professional archaeologist, and have been for over 40 years. Currently a Professor of Anthropology at UT, I previously worked for the National Park Service and before that for a number of southeastern contract archaeology organizations. I specialize in southeastern US archaeology. I enjoy living in and restoring historic houses, brewing mead, and collecting various things, not the least of which are stamps!



Dave Anderson

Knoxville Philatelic Society Meeting – May 3, 2016

The Knoxville Philatelic Society met at the Tennessee Valley Unitarian Universalist Church on Tuesday, May 3, 2016 for the regular monthly meeting. There were 35 members in attendance. President **Barbara Steverson** brought the meeting to order at 7:00. Treasurer **Thomas Lane's** treasurer's report showed cash assets of \$14,169 at the end of April. Receipts for April were \$6,785 and expenses were \$6,863. It is anticipated that KnoxPEX came close to breaking even. The Treasurer's report was approved as presented. Meeting minutes for April were approved as published in the newsletter.

Consideration of by-laws. Previously distributed by email, a motion was passed, unanimously, to accept the new by-laws as drafted.

Communications committee: **Jim Pettway** reported he has a volunteer to assist KPS to come on to Facebook; projected for July. Club membership has been growing more rapidly than any other US club. Stamp acquisition committee: **Bruce Roberts** reported that volunteer efforts are appreciated. \$16,000 catalogue value of stamps has been worked up as APS circuit books.

KnoxPEX location. Motion made and passed to accept the executive board's recommendation to authorize **Thomas Lane** to enter a three year contract with the existing Holiday Inn location. The annual holiday party will be a luncheon – save the date of Saturday, December 10.

Jim Pettway presented **Tom Broadhead** with a Gold Award for APS newsletter competition, the ninth consecutive year (leads the country).

The Knoxville Philatelic Society meets at 7:00 pm on the 1st and 5th Tuesdays of each month at the Tennessee Valley Unitarian Universalist Church at 2931 Kingston Pike, Knoxville, TN 37919.

Annual dues are \$15.00.

KPS Officers:

President	Dave Anderson
Past President	Barbara Steverson
Vice President	Bob Ceo
Treasurer	Thomas Lane
Secretary	John Smartt
Directors	Mike Downs, Randy Haese, Ray Simko, Bob Smith

APS Representative Jim Pettway
& KPS communications jbpettway@comcast.net

Requests for information and submissions of articles and short notes of philatelic interest for the newsletter may be directed to Tom Broadhead, KPS, P.O. Box 50422, Knoxville, TN 37950-0422 – or by e-mail to tomwb50@aol.com.

Nominated officers and directors were introduced. The nominated slate of officers and directors was elected by a consolidated vote.

Adjournment at 7:45.

Respectfully submitted,
John Smartt, secretary



Newly elected KPS officers (left to right): **Ray Simko**, Director; **Thomas Lane**, Treasurer; **Barbara Steverson**, Past President; **John Smartt**, Secretary; **Bob Ceo**, Vice President; **Dave Anderson**, President

KPS Board Meeting – May 3

The Executive Board of the Knoxville Philatelic Society met at the Tennessee Valley Unitarian Church on Tuesday, May 3, 2016, at 6 PM. There were 6 officers/directors in attendance. President **Barbara Steverson** presided.

Business: **Maria Javier** will replace **Stu Hanlein** as chair of the 5 cent stamps program. Book regarding exhibiting - it was decided not to purchase the book at this time. It was moved and passed that the Executive Board recommends to the membership a 3 year contract, negotiated by **Thomas Lane**, for KnoxPEX at the existing Holiday Inn site.

Adjournment at 6:23PM.

Respectfully submitted,
John Smartt, secretary

Upcoming Events

If you have a program to give at a KPS meeting, let vice president and program chair, **Bob Ceo**, know.

June 7 – KPS monthly meeting – program – TBA

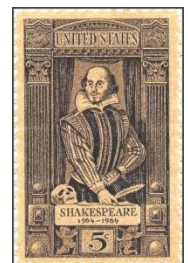
July 5 – KPS monthly meeting – program – TBA

August 2 – KPS monthly meeting – program – TBA

August 20 – KPS Saturday meeting – Earth Fare at Turkey Creek – 10-1

Stamp of the Month

To celebrate the 400th anniversary of William Shakespeare's death, our stamp of the month is the 1964 US commemorative honoring the 400th anniversary of his birth (Scott 1250). These come from the old stock of KPS stamps.



Anyone for Shakespeare?

By Tom Broadhead

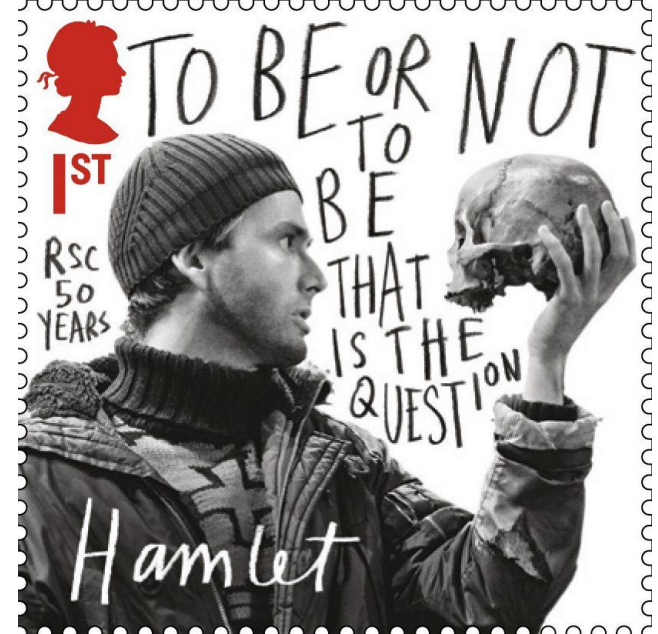
In the middle of April, just as I had finished the May KPS newsletter, I watched a fascinating television show on the Folger Shakespeare Library, one of the great treasures that can be visited in Washington, DC. The show mentioned that William Shakespeare, born in 1564, had died on April 23, 1616. So this is the 400th anniversary of the death of the “Bard of Avon.” Next, I found more than 120 copies of the 1964 U.S. commemorative (Scott 1250) commemorating the 400th anniversary of his birth – your stamp of the month.

But my curiosity was piqued. It was time to rekindle my knowledge, going back to 7th grade readings of his plays, and learn more about Shakespeare on stamps. A Google image search showed many from Britain, the Commonwealth, and other countries (German Democratic Republic (DDR), 1964, Scott 690, below and Vatican City, 2014, Scott 1576, below).

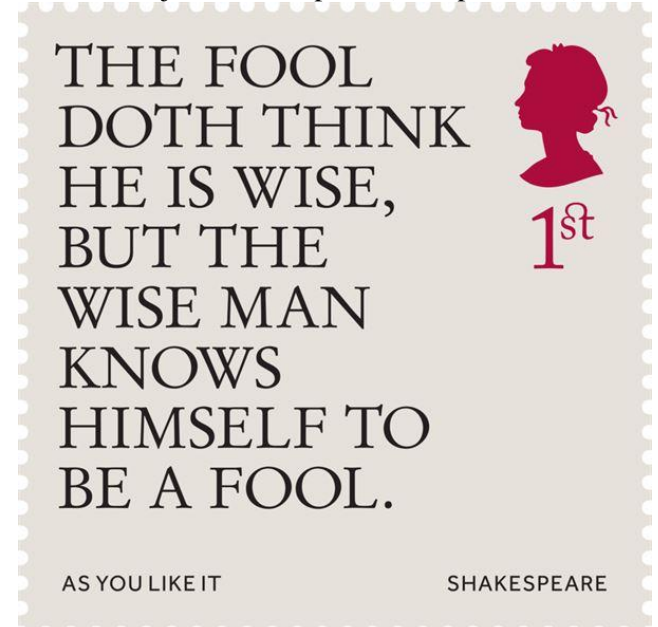


Then I became even more curious about how many Shakespeare stamps there were and how many countries had honored him. An email to **Vera Felts**, American Topical Association Executive Director and KPS member, got me a quick reply and a reference to the ATA Checklist #659. That list, up-to-

date through 2014, shows 128 different stamps, issued by 54 different countries or colonies. These show not only images of Shakespeare, but scenes depicting his plays, such as the stamp below honoring the 50th anniversary of the Royal Shakespeare Company (Great Britain, 2011, Scott 2894).



But wait! There are more! I then received my April 25 issue of *Linn's Stamp News*, and there is an article by Denise McCarty with pictures of 10 new British stamps with quotes from Shakespeare's plays. This new set was just issued April 5 (example below).



Previously, the most issued by a country are a set of 16 issued by Sierra Leone in 1989 (Scott 1050a-h) and three more! The Checklist shows 15 from Great

Continued on page 4.

This month's KPS Meeting – Tuesday, June 7

Continued from page 3.

Britain, but with celebrations this year, that number will go up by 10, and other countries are sure to follow.

Thinking about Shakespeare and his works also led me to contemplate the context of his life and work. Elizabeth I (1533-1603) (Great Britain, 1968, Scott 568) was queen when he was born and during most of his life. The Globe Theatre in London is best known for contemporary performances of his plays (Great Britain, 1995, Scott 1622). There may be more British or other countries' stamps that also relate to this time.



This has been just a scratch on the surface of an interesting topic that just happens to have a recent date significance. Topical collecting can lead to a new understanding of the history and culture of a country. If you have thoughts about starting a topical collection, see the American Topical Association's website – www.americantopicalassn.org. Enter through the main page and go to the Checklist page to find many topics and how to purchase the latest check lists. **Vera Felts** indicates that there are more than 1200 different ATA checklists, and the number is growing. Altogether, there are more than 650,000 items referenced and cross-referenced, with up to a 1000 new listings each month. You can use your checklists to shop the KPS stamp stock or American Philatelic Society circuit books and launch a new collection!

Headed to New York?

By Tom Broadhead

World Stamp Show – NY 2016 - <http://ny2016.org> - is just a few weeks away, and I will feature some news and photos in next month's KPS News. Are you going? Please let me know if and when you will be there – tomwb50@aol.com.

Donations to the KPS

By Jim Pettway

In the past month or so, several donations of stamps and covers have been received by our stamp club. As an APS Estate Advisor for Tennessee I am contacted from time to time by the American Philatelic Society to view and advise those who have inherited collections of stamps and covers. But most contacts come from our KPS website via a *Google* search for Knoxville stamp clubs.

During the course of a year KPS receives about 4-6 donations. Unfortunately most of what I see are beginner collections that haven't seen the light of day in decades. What were mint stamps are stuck to the pages and many U.S. stamps are best used for postage. But then there are some treasures sometimes found hidden among the pages of a stamp album. Granted, these are far and few between but they appear occasionally and bring a smile to my face.

So what happens to the donations? **Bruce Roberts** and the KPS Stamp Acquisition Committee cull through the stamps, albums and covers and present these to members for purchase. Many items end up in the Nickel Stamps while others are carded and identified by Scott number and priced at a discount from Scott catalog values. Some stamps, supplies, and covers go to **Randy Haese** for the beginner collectors.

One thing that the KPS isn't currently able to do is offer a receipt informing the donor that their donation is accepted by the KPS in accordance with IRS 501(c)3. It is our hopes that this will change in the near future.

Treasures from the KPS Inventory

By Bruce Roberts

In 1971, Singapore issued a single stamp (Scott 142) and block of four (Scott 143) shown at right to commemorate its Earth Satellite tracking station. These high catalog stamps are now available for you, as new additions to the KPS inventory!

