



Postmark Atlanta
Atlanta Stamp Collector's Club



#0357-031583

April 2020 Newsletter

As we emailed earlier, meetings are not being held until the public health danger is past.

Dear fellow Atlanta philatelists;

This coronavirus/COVID-19 epidemic is moving in ways that are hard to predict. We know that there are cases in Georgia, that people without symptoms ("silent carriers") can be circulating, and that people above the age of 60 are especially at risk of bad disease and death. True, a small gathering like our Club is probably not going to put anyone at danger, but we would all feel awful if one of us contracted this virus from another member.

Accordingly, and reluctantly, the officers of the Club-- LeA, Barbara, and I-- agree that it is best to suspend meetings until we all have a better idea of this epidemic. Ken Andreasen, special apologies to you as we know you had an excellent presentation on the Faroe Islands planned for this Tuesday; we look forward to hearing it at a later date.

Finally, I would be remiss as an infectious disease MD epidemiologist for over 40 years not to reinforce some basic guidelines: don't panic; wash your hands frequently; stay away from people who are coughing/obviously ill (well, duh!); if you get sick (yes, it might be just a cold) stay home!

I am getting a lot of questions from friends, but many of them can be answered. by going to [cdc.gov](https://www.cdc.gov). Briefly, no vaccine, no treatment, so please no magical thinking. We will get through this, and I think and hope that our rational behavior will mitigate what would be a disaster for earlier generations.

Yours in philately,

Scott

UPCOMING EVENTS

Stamp Trading at home of Don Laberteaux cancelled until further notice

The GwinnPex Stamp Show scheduled for April 17 – 18 has been cancelled due to the coronavirus. They expect to hold a show in late August.

August 20 – 23, 2020 The Great American Stamp Show. Combined show American Philatelic Society, American Topical Association and American First Day Cover Society. Hartford Connecticut Convention Center. www.stamps.org/greatamericanstampshow

Patricia Airways Inverted Biplane Stamp By Steve Swain

As all U.S. collectors know, the most famous error in U.S. philately is the 24-cent inverted Jenny issued May 10, 1918, in which the image of the Curtiss JN-4 airplane in the center of the stamp's design is printed upside-down. Only one pane of 100 stamps was printed. An inverted Jenny was sold in November 2018 for \$1.6 million.

Not being a Canadian stamp collector, I was not aware until recently of another inverted biplane stamp, although not as valuable as the US Jenny. The Canadian invert was a semi-postal created in 1926-7 for Patricia Airways and Exploration Company Limited (PAEL).

Sanctioned in 1926 by the Canadian postal system, PAEL provided an air service to carry goods, passengers and mail between Sioux Lookout, its northern headquarters, and the Northern Ontario goldfields of Woman Lake, Pine Ridge, Reed Lake, Birch Lake and Rouyn, Québec. The company took its name from the Patricia District of Northern Ontario – itself named in 1912 after H. R. H. Princess Patricia of Connaught (1886-1974), later the Lady Patricia Ramsay.



The company's first plane was a Curtiss Lark (shown above). The plane became the main design feature of the stamps issued by the airline. According to instructions provided by the Canadian

postal system, the PAEL stamps could be purchased at all post offices and the PAEL offices. Regular postage was to be affixed on the front of the envelope. The PAEL stamp was to be placed only on the back of the envelope.

The company issued stamps in two colors. One on a yellow-orange paper which signified the 25-cent rate between Pine Ridge and Red Lake. The second on greenish-blue paper which signified the 50c rate between Woman Lake, Birch Lake and Cat Lake.

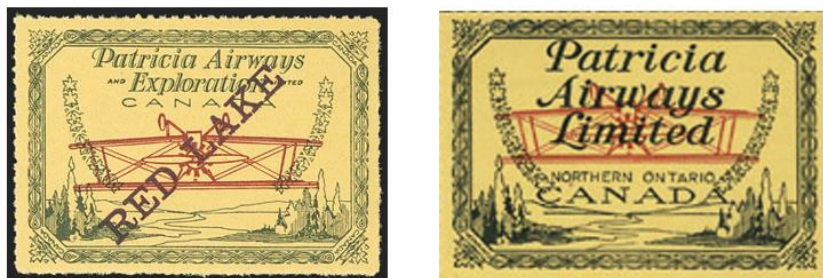


The above left stamp image is the first stamp issued. The yellow background indicates the 25-cent rate. The stamp images above middle and right have overprints to signify new rates.

Stamps issued using the greenish-blue paper are shown below. As with the stamps printed on yellow paper, overprints on the greenish-blue stamps signify new rates.



Stamps with an inverted Curtiss Lark biplane were first printed using the original “Patricia Airways and Exploration Limited” design on yellow paper. The below left stamp image shows an inverted example that sold at auction for \$2,100., Only a single pane of eight stamps with the inverted plane were printed. No stamps using the greenish-blue paper were printed with an inverted biplane.



PAEL was declared bankrupt on October 17, 1927. A portion of its assets was sold to a new company, Patricia Airways Limited. Modifications were made to the semi-postal company stamps to reflect the new company name and it was from this design that an inverted version of the stamp was printed, shown above right. A recent ad from Gary J. Lyon (Philatelist) Ltd. offers an example of this inverted stamp for \$1,695.

Even though only a handful of the inverted Patricia Airways stamps were printed, they command considerably less in sales than the U.S. inverted Jennys. Why the difference? Possibly because they were only semi-postal stamps which many collectors relegate to the category of “cinderella” stamps or “labels”?

Patricia Airways limited flights continued throughout 1928. However, mail contracts were few and thus the company lasted only a short period of time not being able to remain profitable with providing only minimal passenger transportation.

Our club is a member of The American Philatelic Society. Their recent newsletter included this notice and link to their monthly magazine.

The American Philatelist Online

To encourage members and collectors to learn more about the APS, we have lifted the members-only restrictions on accessing *The American Philatelist* online. Please feel free to share with your fellow collectors and encourage them to connect and learn more about all our great benefits. [Please access The American Philatelist here.](#)

If you are getting a print version of this newsletter, the web address is: www.stamps.org/the-american-philatelist

Also there will be online Stamp Chat events using Zoom that you can access information on at this link:

<https://stamps.org/news/c/news/cat/local/post/aps-to-host-live-stamp-chats-on-zoom-beginning-monday-march-23>

● * * * * *

Our Southeast Federation of Stamp Clubs includes our club’s page. The main site is www.sefsc.org. Our club’s page is at www.sefsc.org/atlanta-stamp-collectors-club.html. But be sure to check out all the other information on the site. Check out where meetings are so you can visit as you travel.

If you are interested in writing for our newsletter or presenting to our club at one of our monthly meetings, please contact me at the email below or Scott Holmberg at sdholmberg1@gmail.com with your ideas.

LeA Coe, Secretary

leacoe@bellsouth.net