



January 2017

Monthly Newsletter

Issue no. 591

President - Stephen Schmidt Vice President - Don Ashley Secretary - Pat Koppel Treasurer - Dick Jackson

The President's Dispatch

The December Holston Stamp Club Christmas Party and meeting held on Dec. 15th was another success. There were 22 members in attendance and I believe everyone enjoyed themselves despite the fact that your faithful president forgot to ensure that there were drinks and eating utensils (cups, plates, napkins, etc.) available. The members brought lots of cookies, cakes and other goodies and the club provided pizza for everyone.



The white elephant gift exchange was a lot of fun and everyone went home with something that they may or may not have found useful. Maybe some of these items will appear in the gift exchange at the next Christmas Party. My family came home with two elephants and a Avon Wild Country bottle in the shape of a roadside USPS mail drop box. The mail box is on display with my other stamp related trinkets and the elephants are on the shelves in Kaly's and Colyb's rooms.

The final submissions for the cachet contest were submitted for judging and hopefully we will have a winner announced at the January meeting. Good luck to all who entered and thank you for your entries.

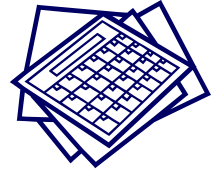
I hope all of our members took advantage of the discounted club dues for the 2017 year. By the time you read this the discount will have expired and the dues rate reverted to our normal annual fee.

Does anyone know of any post office that still has the inverted Jenny souvenir stamp sheets? If so, could you let me and anyone else who may be interested know which post office (s) have them.

Something New :

I am going to try to mention a bit of trivia in each of my columns from this point forward. If any of th members have a bit of trivia (philatelic

Club Calendar



*Guests and Visitors
always Welcome!*

Jan. 19th - 7 p.m.
Monthly Meeting

related) they would like to see published in this column please submit it to me via e-mail at zerogoofs@yahoo.com or hand it to me on paper at one of our meetings.

This Month's Bit of Trivia:

According to George B. Sloane (born Apr. 3, 1898, died Jul. 15, 1958) as related in the July 19, 1941 issue of *Stamps Magazine*, the cost of a pack of 1,000 stamp hinges was at that time a dime. I did some checking and according to the web-site, <http://www.usinflationcalcuator.com>, something that cost \$0.10 in 1941 should cost \$1.64 today however I have found a pack of 1,000 stamp hinges to run in the \$3.00 to \$4.00 range.

Steve

Having fun with gift exchange.



More about HOLPEX 2017 Cachet by Don Ashley

As Steve mentioned on the other side of this page the cachet submissions for the next HOLPEX are in. There are four and Dennis Bowman and his committee have been evaluating them. The winning cachet envelope design will be reported on by them during our January meeting. At that time the winner will get a check for \$25 and be photographed for a feature in the next club newsletter. BE SURE TO ATTEND THE JANUARY MEETING to see the winning entry!

December meeting special auction:



After the fun gift exchange members got serious about deciding what auction items they would bid on and how much they would bid.



Monthly Treasury Report

Beginning Cash Dec. 1, 2016	\$2,538.49
Total Income for Dec.	\$349.42
Stamp Sales Program	\$199.42
2017 Club dues	\$150.00
Total Disbursements for Nov.	(\$ 50.57)
APS Circuit Book Expenses	(\$ 8.80)
Pizzas for Christmas Party	(\$41.77)
Ending Balance Dec. 31, 2016	\$2,837.34
Cash on hand Dec. 31, 2016	\$2,922.61
Uncleared checks / Adjustment	\$85.27

FYI. Sixty lots were sold at the special auction (combination of items from three members, items donated to the club and items from the club's inventory). The items sold for a total of \$267.90.

Linn's Annual Event

by your Newsletter Editor

Now is the time to participate in *Linn's* annual poll on the stamps and postal stationery issued by USPS during 2016. *Linn's* especially welcomes votes from stamp clubs like ours and encourages distributing paper ballots among club members and mailed to *Linn's* (see next page for ballot) or completing the poll on-line at www.Linns.com.

The poll lists 15 stamps or stamp sets as commemoratives, 27 definitive and special stamps and one postal stationery.

1. Richard Allen (Black Heritage series)
2. Year of the Monkey (Lunar New Year series)
3. Sarah Vaughan (Music Icons series)
4. Shirley Temple (Legends of Hollywood series)
5. World Stamp Show - NY (two stamps)
6. Repeal of the Stamp Act
7. Service Cross Medals (four stamps)
8. Views of Our Planets (eight stamps)
9. Pluto Explored (two stamps)
10. Classics Forever (six stamps)
11. National Parks (sixteen stamps)
12. Indiana (200th statehood anniversary series)
13. Jaime Escalante
14. Star Trek (four stamps)
15. Wonder Woman (four stamps)



Unless otherwise indicated by announcement in the newsletter, Holston Stamp Club conducts its regular meeting on the 3rd Thursday each month at 7 p.m.

Hope to C. U. there

Club contacts...

President Steve Schmidt: zerogoofs@yahoo.com, (423) 573-2947

V.P. Don Ashley: dwa7@bvu.net

Secretary Pat Koppel: plkoppel@comcast.net

Treasurer Dick Jackson: dick10se@gmail.com

Newsletter Editor Pat Koppel: plkoppel@comcast.net

OUR INTERNET WEBSITE
www.sefsc.org/holston-stamp-club.html

Linn's 2016 U.S. Stamp Popularity Poll

COMMEMORATIVE STAMPS



1. Richard Allen



2. Year of the Monkey



3. Sarah Vaughan



4. Shirley Temple



5. World Stamp Show-NY 2016



6. Repeal of the Stamp Act, 1766



7. Service Cross Medals



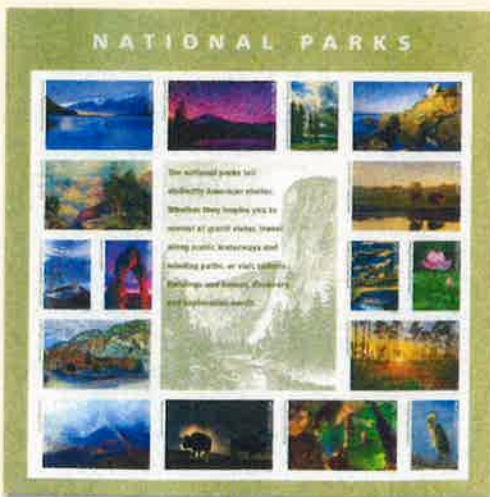
8. Views of Our Planets



9. Pluto Explored



10. Classics Forever



11. National Parks



14. Star Trek



12. Indiana Statehood



15. Wonder Woman



13. Jaime Escalante

DEFINITIVE AND SPECIAL STAMPS



16. Quilted Paper Heart



17. Apples



18. Grapes



19. Red Pears



20. La Cueva del Indio



21. Columbia River Gorge



23. U.S. Flag

DEFINITIVE AND SPECIAL STAMPS



22. Botanical Art



34. Patriotic Spiral



35. Eastern Tailed-Blue Butterfly



24. Moon



25. USA Star



26. Colorful Celebrations



27. Eid Greetings



29. Star Quilts



31. Henry James



33. Songbirds in Snow



36. Jack-o'-Lanterns



39. Holiday Window Views



37. Kwanzaa



38. Diwali



41. Hanukkah



42. Nativity



28. Soda Fountain Favorites



30. Pickup Trucks



32. Pets



40. Florentine Madonna and Child

POSTAL STATIONERY



43. La Cueva del Indio stamped envelope

Continued from page 22

Four definitives, called Songbirds in Snow, were issued at the American Philatelic Society's 130th annual convention and picture golden-crowned kinglets, red-breasted nuthatches, a cedar waxwing, and a northern cardinal, each perched on a snow-covered tree branch. The artwork is by Robert Giusti, whose bird paintings have appeared on numerous other U.S. stamps in recent years.

Fruit is the subject of three low-value denominated coil stamps. A 5¢ stamp depicting clusters of pinot noir grapes and a 10¢ stamp picturing two red pears were issued early in the year and were followed in August by a 1¢ stamp showing a pair of apples on a branch. All three images were created in pen-and-ink and watercolor by John Burgoyne. According to a published interview with USPS stamp development director William Gicker, other Burgoyne fruit illustrations will appear on future low-denomination U.S. stamps.

The sixth entry in the Postal Service's Butterflies definitive series illustrated by Tom Engeman shows an Eastern Tailed-Blue Butterfly. These large square stamps meet the first-class rate for certain irregularly sized envelopes, including square ones for greeting cards, and in place of a denomination bear the words "Non Machineable Surcharge."

The year saw yet another forever stamp design featuring the U.S. flag, this one waving against a backdrop of clouds and a blue sky. It was issued in 10- and 20-stamp panes and 100-stamp coils made by two different printers, resulting in four collectible varieties. A related design evoking Old Glory was presented on a Patriotic Spiral stamp issued in booklet and coil form and showing 50 blue and red stars spiraling around a central star of gold.

Three nondenominated coil stamps were issued for use by businesses that presort their outgoing mail. They are a pair of (25¢) stamps for first-class mail showing two different star-shaped quilt patterns, and a single (5¢) with a single large red star and the blue letters "USA" for nonprofit organizations.

The tradition of special stamps to decorate holiday mail was expanded to include two holidays that had previously gone without specific U.S. postal commemoration: the Hindu festival of Diwali, which spans five days each autumn and celebrates the triumph of good over evil, and the secular American

celebration of Halloween.

The Diwali stamp, which had been sought by an Indian-American organization and had backing in Congress, features a photograph of a traditional diya oil lamp against a sparkling gold background. The Halloween block of four was printed in orange and black and shows photos of a quartet of grinning jack-o'-lanterns.

One of the year's two religious-themed Christmas stamps incorporates an original Nativity scene by Nancy Stahl, while the other reproduces a detail from a 15th-century Florentine tempera-on-poplar painting, artist unknown, showing Mary and the infant Jesus.

The 2016 Contemporary Christmas issue comprises a block of four stamps with artwork by William Low depicting familiar interior and exterior holiday decorations: a candle on a windowsill, a snow-covered wreath, a bright gold star ornament, and a richly decorated Christmas tree viewed through a window from outside.

Low also created a similarly themed

illustration for the 12th U.S. stamp celebrating the Jewish holiday of Hanukkah, this one showing a menorah in the window of a home, with snowy branches visible outside.

The stamp for Kwanzaa, also the 12th in its series, marked the 50th anniversary of a nonreligious festival of community and culture celebrated by an estimated 18 million African Americans. It pictures a woman holding a large purple bowl filled with fruits and vegetables, symbolizing the abundance of African first harvests. The ninth stamp for the Muslim holiday of Eid bears a gold-colored script message in Arabic on a purple background and was designed, like its predecessors, by Virginia-based calligrapher Mohamed Zakariya.

The 2016 Love stamp — which happened to be the first U.S. issue of 2016 — features a colorful quilled paper heart created by Russian-born paper artist and illustrator Yulia Brodskaya. Quilling uses narrow paper strips that are rolled, curled, shaped into a form, then laid on their edges and glued into place. ■

LINN'S 2016 U.S. STAMP POPULARITY POLL		
Select from the following list the 2016 commemorative stamps ; 2016 definitive and special stamps ; and 2016 postal stationery that have the best and worst designs in your opinion, as well as those you feel are the most important and least necessary in subject.		
VOTE BY THE NUMBER PRECEDING THE ISSUE NAME ONLY		
Definitives and Special stamps		
1. Richard Allen	2. Year of the Monkey	3. Sarah Vaughan
4. Shirley Temple	5. World Stamp Show-NY 2016	6. Repeal of the Stamp Act, 1766
7. Service Cross Medals	8. Views of Our Planets	9. Pluto Explored
10. Classics Forever	11. National Parks	12. Indiana Statehood
13. Jaime Escalante	14. Star Trek	15. Wonder Woman
BEST DESIGN _____	WORST DESIGN _____	MOST IMPORTANT _____
Commemorative stamps		
16. Quilled Paper Heart	17. Apples	18. Grapes
19. Red Pears	20. La Cueva del Indio	21. Columbia River Gorge
22. Botanical Art	23. U.S. Flag	24. Moon
25. USA Star	26. Colorful Celebrations	27. Eid Greetings
28. Soda Fountain Favorites	29. Star Quilts	30. Pickup Trucks
31. Henry James	32. Pets	33. Songbirds in Snow
34. Patriotic Spiral	35. Eastern Tailed-Blue Butterfly	36. Jack-o'-Lanterns
37. Kwanzaa	38. Diwali	39. Holiday Window Views
40. Florentine Madonna and Child	41. Hanukkah	42. Nativity
BEST DESIGN _____	WORST DESIGN _____	MOST IMPORTANT _____
Postal stationery		
43. La Cueva del Indio stamped envelope		
<i>Because there is only one 2016 postal stationery issue, there is no voting in this category. The La Cueva del Indio stamped envelope is eligible for favorite 2016 stamp voting.</i>		
Now vote for your single personal favorite stamp issue of 2016. Your choice can be from the commemorative, definitive-special or postal stationery categories. Se-tenant issues (different designs in one pane) are counted as one issue.		
MY FAVORITE 2016 STAMP (please write in number and stamp issue name):		
No. _____ Issue _____		
SEND BALLOT TO: Linn's Stamp Poll, Box 4129, Sidney, OH 45365. All ballots must be postmarked by March 1, 2017. Photocopied ballots are acceptable. Stamps are pictured in this issue on pages 20-21.		